

Body Rear End and Opener

- Bumper fascia is made of plastic. Do not use excessive force and be sure to keep oil away from it.
- Back door lock system adjustment: Adjust lock & striker so that they are in the center.
After adjustment, check back door lock operation.
- Back door hatch lock system adjustment: Adjust lock & striker so that they are in the center.
After adjustment, check back door hatch lock operation.
- Opener cable: Do not attempt to bend cable using excessive force.
- After installation, make sure that back door and fuel filler lid open smoothly.

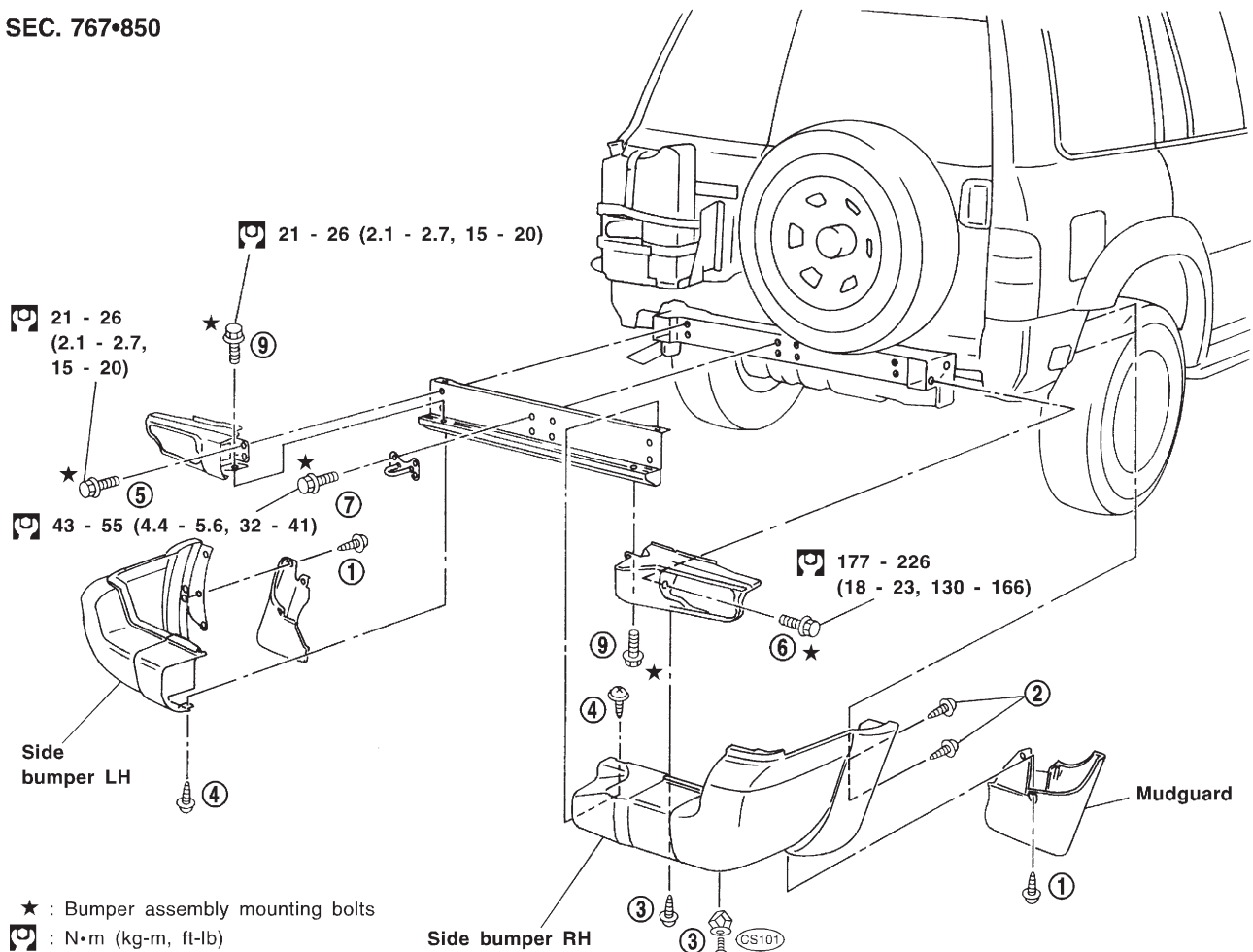
WARNING:

- Be careful not to scratch back door stay and/or back door hatch stay when installing back door and/or back door hatch. A scratched stay may cause gas leakage.
- The contents of the back door stay and back door hatch stay are under pressure. Do not take apart, puncture, apply heat or allow fire near them.

REMOVAL — Rear bumper assembly

- ① Remove screws securing left and right mudguard.
- ② Remove bolts securing left and right rear side bumper to rear fender.
- ③ Remove screws and clips securing left and right rear side bumper to rear bumper side reinforcement.
- ④ Remove bolts securing left and right rear side bumper to rear center bumper.
- ⑤ Remove bolts securing left and right rear bumper side reinforcement to rear center bumper.
- ⑥ Remove bolts securing left and right rear bumper side reinforcement to frame assembly.
- ⑦ Remove bolts securing rear hook assembly.
- ⑧ Extract rear bumper assembly.
- ⑨ Remove bolts securing left and right rear bumper side reinforcement to rear center bumper.

SEC. 767•850



SBT520